



The
ISLANDS
of the
GULF

Cape Breton
and
Prince Edward.

LP
F30 2
18--
R1502

The EDITH and LORNE PIERCE
COLLECTION of CANADIANA



Queen's University at Kingston

RAILWAY SERIES PHOTO ALBUMS

THE ISLANDS OF THE GULF—CAPE BRETON AND PRINCE EDWARD.
THROUGH THE EVANGELINE COUNTRY TO HALIFAX.

ST. JOHN—CITY AND RIVER.

MONTREAL—HISTORIC AND PICTURESQUE.

TORONTO—THE IDEAL SUMMER CITY.

PRICE TWENTY-FIVE CENTS EACH.

Published by W. G. MACFARLANE,

"Saturday Night" Building, Toronto,

Expressly for THE CANADA RAILWAY NEWS CO., Limited, TORONTO.

SCENIC
CANADA



PHOTO
ALBUM
SERIES

The Islands of the Gulf: CAPE BRETON AND PRINCE EDWARD.



FANNED by the breezes, and lapped by the waters of the Gulf of St. Lawrence, the Islands of Cape Breton and Prince Edward are ever delightful. The dwellers and the tourists bathe in soft sunshine, and the zephyrs and billows blow new life into their sluggish veins.

Cape Breton is a land of delightful scenery. The Bras D'Or Lakes are a lovely body of placid water, reflecting the graceful outlines of the encircling hills. On the way to ancient, historic Louisburg the railway skirts Mira River and Catalone Lake, blissful and contented nature places. Louisburg is worth a visit, and a day could be delightfully spent, "Parkman" in hand, fighting over again the two great battles that were fought there for the mastery of half a continent. The erstwhile quiet little metropolis of the island, Sydney, is now witnessing a new birth, and a great northern Pittsburg is to arise here, dictating iron prices to the world. Its two thousand people, it is expected, will in ten years grow to 40,000, and Sydney will become an important commercial and manufacturing centre. The boom which has struck Sydney, will, it is expected, next strike North



THE LOUISBURG MONUMENT.



SYDNEY HARBOR, CAPE BRETON.



A CHARACTERISTIC CAPE BRETON BOATING SCENE, NEAR SYDNEY.



TOWN AND HARBOR OF SYDNEY, CAPE BRETON.



THE LAST OF LOUISBURG.

Sydney, in which a syndicate of English capitalists are deeply interested. Cape Breton certainly offers exceptional advantages as an iron producing and manufacturing centre, with abundant coal right at hand, the ore to be got from Newfoundland without railway carriage, and with admirable shipping facilities to reach the world's markets.



NORTH SYDNEY AND HARBOR, C.B.



MIRA RIVER ON THE ROAD TO LOUISBURG, C.B.

Prince Edward Island draws thousands of people to its shores during the summer months, for its coolness and bathing. It is a beautiful spot, with its rich, red soil, and its vivid green grasses and woods. In the richness of the colors of its landscapes, and the remarkable clearness of its atmosphere it is almost tropical, and the visitor gets much the same impression on approaching its shores as he does when cruising among the West Indies.



HARBOR AT LOUISBURG, SHOWING DOMINION COAL COMPANY'S PIER.

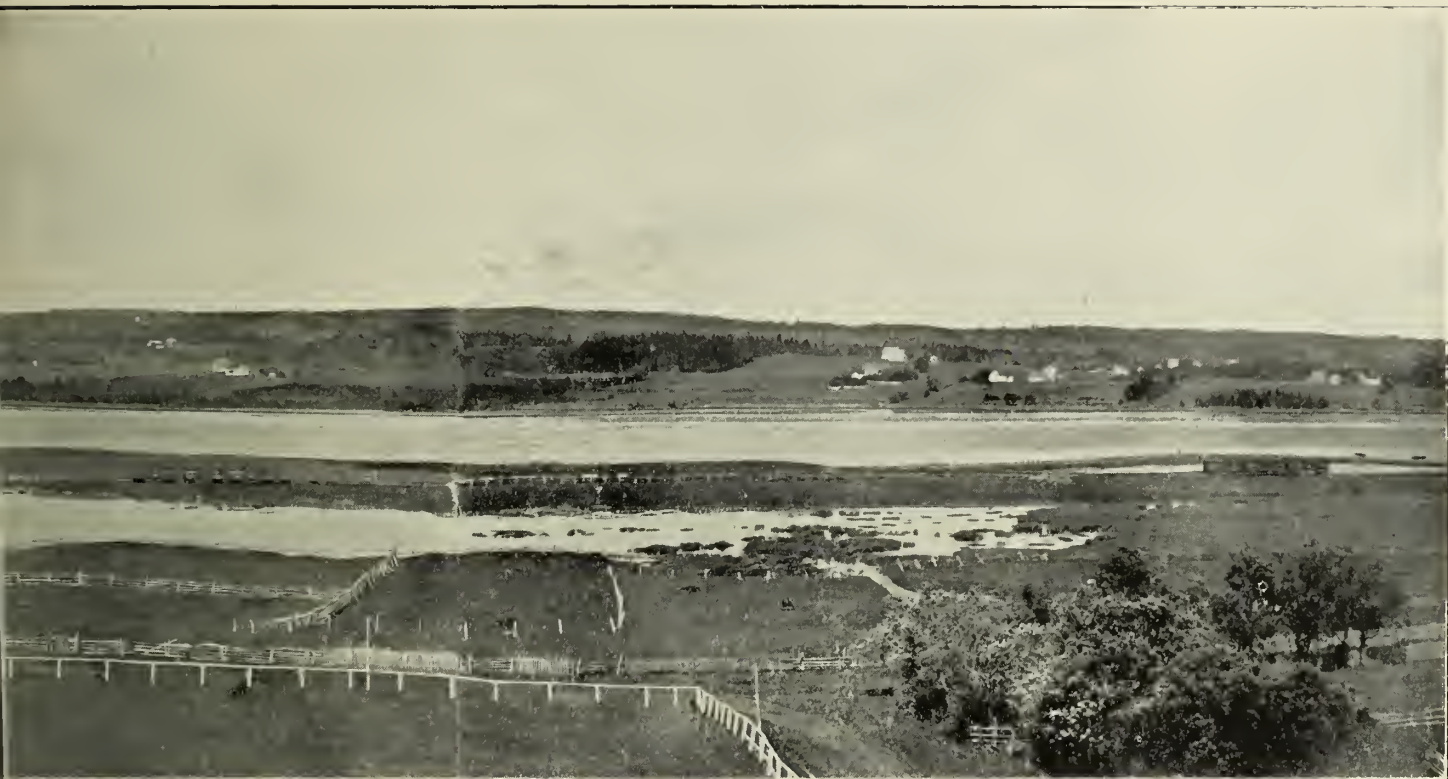


CATALONE LAKE ON THE ROAD TO LOUISBURG, C.B.



THE SITE OF GREATER SYDNEY

At Sydney, Cape Breton, The Dominion Iron and Steel Company, Limited, a Twenty Million Dollar American enterprise is being developed. It is one of the great iron producing cities of the world. The quiet homesteads are giving way to great furnaces and mills. The growth of a great city is one to inspire the beholder with awe, and it is interesting to



NEY. (ON THE FURTHER SHORE).

Canadian Syndicate, are creating a great manufacturing city, one which will enter into competition with the greatest
both factories that stretch for some miles along the shore of an arm of Sydney Harbor. The sudden
serve in the East that phenomenon which was supposed to pertain peculiarly to the West,



PROVINCIAL BUILDING, CHARLOTTETOWN.

The island province is a prosperous agricultural country, and its people also engage a great deal in fishing. Among its bustling towns, Charlottetown, the metropolis, must first be mentioned. Handsome buildings and streets and pretty squares give the stranger a most pleasing impression, while it lies in the centre of a number of most delightful beach and inland resorts, where bathing, boating, shooting and fishing are to be had in abundance.

Brackley Beach is reached by a carriage drive of fifteen miles from Charlottetown, and the surf bathing and fishing are excellent. Other pleasant resorts within a few miles are Rustico Beach, Tracadie Beach, Stanhope and Hampton. Malpeque, Alberton, Tignish and Souris are famed for their plover and sea-fowl shooting. Georgetown is another tourist centre, and is a beautifully laid out town. Altogether, Prince Edward Island can accommodate many thousands of tourists during the summer months, and has enough delicious pure air to supply millions with new life and vigor.



ST. JAMES PRESBYTERIAN CHURCH.
CHARLOTTETOWN, P.E.I.



VICTORIA ROW, CHARLOTTETOWN, P.E.I.



PARK ROADWAY, CHARLOTTETOWN.



VIEW EAST OF POST OFFICE, CHARLOTTETOWN, P.E.I.



FORT EDWARD, CHARLOTTETOWN.



THE ISLAND'S LOVELY BEACHES—AT CAVENDISH



A HARVESTING SCENE IN THE LAND OF SUNSHINE, PRINCE EDWARD ISLAND.



THE SAND DUNES OF PRINCE EDWARD ISLAND.

Travel

to the

"Islands of the Gulf"

where are Beaches, Yachting Grounds, and
Pure and Ever Tonic Air.

-via-

"Your Own Line"

the

INTERCOLONIAL
RAILWAY

JNO. M. LYONS,

General Passenger and Ticket
Agent,

MONCTON.

E. TIFFIN,

TRAFFIC MANAGER,

MONCTON.